

## Nike Sphere Dry Diamond Polo. 354055



Achieve the pinnacle of performance in this style that pairs a rich diamond texture with Nike Sphere Dry moisture management technology. The ultramodern fabric has a textured inside surface that minimizes cling by allowing only a portion of the shirt to come in contact with the skin. Perfect for any occasion, this exceptional shirt is designed for maximum movement and increased air flow. Finished with a self-fabric collar and open hem sleeves. Features a three-button placket. Pearlized buttons are selected to complement the shirt color. The contrast Swoosh design trademark is embroidered on the left sleeve. Made of 6.35-ounce, 89/11 polyester/spandex.

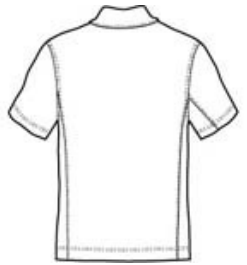
**CARE INSTRUCTIONS**

Machine wash warm, with like colors. Do not bleach. Do not use softeners. Tumble dry low. Cool iron. Do not dry clean.

[Tips For Effectively Screen Printing Polyester Fabrics](#)



front



back

**HOW TO MEASURE**



**CHEST WIDTH**

Measure under the arm and around the fullest part of the chest with arms down, keeping tape horizontal.

**SIZE CHART**

	XS	S	M	L	XL	2XL	3XL	4XL
Chest	32-35	35 - 37 1/2	37 1/2 - 41	41 - 44	44 - 48 1/2	48 1/2 - 53 1/2	53 1/2 - 58	58 - 63

**COLOR INFORMATION**

Please note: PMS code information is shown only when an exact match is available.



Black  
PMS PROCESS  
BLACK C



Diffused Blue



Midnight Navy  
PMS 2767C



Mountain Blue  
PMS PMS 653C



Olive Khaki  
PMS 405C



Varsity Red  
PMS 704C



White