

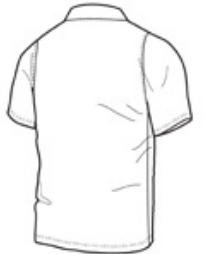
## Nike Dri-FIT Fade Stripe Polo. 677786



Subtle horizontal stripes combine with Dri-FIT moisture management technology in this polo that keeps you dry on and off the course. Design details include a self-fabric collar, three-button placket and open hem sleeves. The contrast Sw oosh design trademark is embroidered on the left sleeve. Made of 3.4-ounce, 100% polyester Dri-FIT fabric.

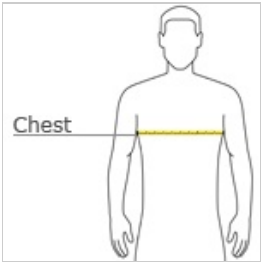


front



back

### HOW TO MEASURE



#### CHEST WIDTH

Measure under the arm and around the fullest part of the chest with arms down, keeping tape horizontal.

### SIZE CHART

	XS	S	M	L	XL	2XL	3XL	4XL
Chest	32-35	35 - 37 1/2	37 1/2 - 41	41 - 44	44 - 48 1/2	48 1/2 - 53 1/2	53 1/2 - 58	58 - 63

### COLOR INFORMATION

**Please note: PMS code information is shown only when an exact match is available.**



Dark Steel Grey/  
Anthracite  
PMS 430C



Photo Blue/ College  
Navy  
PMS 7698C



Sport Teal/  
Anthracite  
PMS 444C