

# Port Authority® Easy Care Extra Long Bib Apron with Stain Release. A700

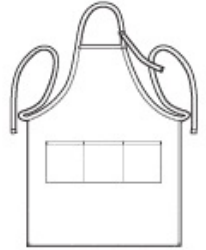


This extra-long apron offers protection from stains and wrinkles. The adjustable neck strap ensures a proper fit.

- 8-ounce, 65/35 poly/cotton twill
- Three front pockets
- 25"w x 34.5"l

**CARE INSTRUCTIONS**

Machine wash warm, do not bleach. Tumble dry low.



front

**SIZE CHART**

|                    | OSFA   |
|--------------------|--------|
| Length             | 34 1/2 |
| Apron Waist Width  | 25     |
| Apron Width at Top | 9 1/2  |
| Pocket Height      | 7      |
| Pocket Width       | 21 1/2 |

**COLOR INFORMATION**

Please note: PMS code information is shown only when an exact match is available.



Black  
PMS NTR BLACK  
C



Khaki  
PMS 7531C



Navy  
PMS 7547C



Red  
PMS 200C



Royal  
PMS 7687C



White