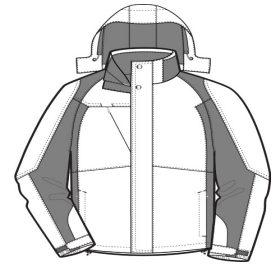


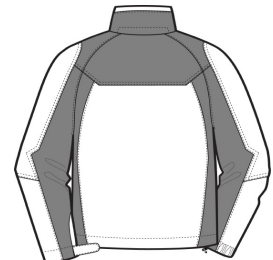


This jacket offers three great layers for one great price. The plush microfleece jacket is perfect on cool days; the critically seam-sealed, w aterproof shell on rainy days; or combine the two for more protection.

- 100% polyester shell w ith PU coating
- 100% polyester lining
- 3000MM fabric w aterproof rating
- Critically seam-sealed for added w aterproof protection
- 3000G/M² fabric breathability rating
- Detachable hood w ith adjustable self-fabric tab, draw cord and toggles
- Interior storm flap w ith hook and loop closures and chin guard
- Tw o-way Vislon zipper
- Front zippered pockets
- Half elastic, half self-fabric adjustable tab cuffs w ith hook and loop closures
- Port Pocket™ for easy embroidery access
- 100% polyester microfleece inner jacket has an anti-pill finish and open cuffs w ith spandex binding
- Open hem w ith draw cord and toggles



front



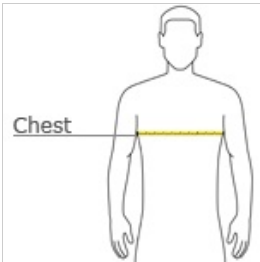
back

CARE INSTRUCTIONS

Machine w as cold on gentle cycle w ith like colors. Use mild detergent. Remove immediately. Do not allow to lay on itself w hen w et. Tumble dry low . Cool iron if needed. Do not dry clean.

[Tips For Effectively Screen Printing Polyester Fabrics](#)

HOW TO MEASURE



CHEST WIDTH

Measure under the arm and around the fullest part of the chest w ith arms dow n, keeping tape horizontal.

SIZE CHART

	XS	S	M	L	XL	2XL	3XL	4XL
Chest Size (inches)	32-34	35-37	38-40	41-43	44-46	47-49	50-53	54-57

COLOR INFORMATION

Please note: PMS code information is shown only when an exact match is available.



Black/ Ink Grey



Insignia Blue/
Navy Eclipse