

Port Authority® Ladies Crosshatch Easy Care Shirt. L640



With a beautiful two-color weave--not to mention wrinkle resistance--this poplin shirt has a pleasing texture and truly impresses in the office.

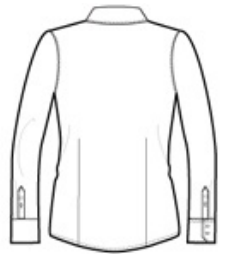
- 3-ounce, 60/40 cotton/poly
- Open collar and neckline
- Front and back darts
- Pearlized buttons
- Mitered two-button cuffs

CARE INSTRUCTIONS

MACHINE WASH COLD WITH LIKE COLORS, ONLY NON-CHLORINE BLEACH, TUMBLE DRY LOW, WARM IRON IF NEEDED

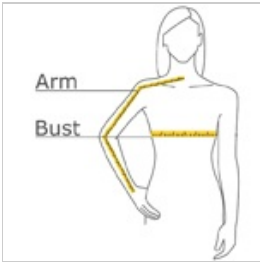


front



back

HOW TO MEASURE



BUST

Measure under the arm and around the fullest part of the bust with arms down, keeping tape horizontal.

ARM

Place hand on hip. Start at the center of the back of the neck and measure across the shoulder, to the elbow, and then down to the wrist.

SIZE CHART

	XS	S	M	L	XL	XXL	3XL	4XL
Size	2	4/6	8/10	12/14	16/18	20/22	24/26	28/30
Bust	32-34	35-36	37-38	39-41	42-44	45-47	48-51	52-55
Arm	30 - 30 3/4	30 3/4 - 31 1/2	31 1/2 - 32	32 - 32 1/2	32 1/2 - 33	33 - 33 3/8	33 3/8 - 33 3/4	33 3/4 - 34 1/2

COLOR INFORMATION

Please note: PMS code information is shown only when an exact match is available.



Chambray Blue
PMS 3584C



Deep Blue
PMS 2380C



Grape Harvest
PMS 7665C



Navy Frost
PMS 533C



Red Oxide
PMS 7638C



Soft Black
PMS NTR BLACK
C