

**Sport-Tek® Ladies Pullover Hooded Sweatshirt. LST254**



A proven winner improved with an updated fit, beefier rib knit details and a three-panel hood. It's also colorfast and resists shrinkage.

- 9-ounce, 65/35 ring spun combed cotton/poly fleece
- Twill-taped neck
- Dyed-to-match draw cord
- 2x2 rib knit cuffs and hem
- Fully coverseamed
- Set-in sleeves
- Front pouch pocket

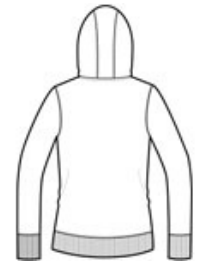
*\*Please note: This product is transitioning from woven labels to tag-free labels. Your order may contain a combination of both labels*

**CARE INSTRUCTIONS**

Machine wash cold with like colors. Do not bleach. Tumble dry low. Warm iron if necessary.



front



back

**HOW TO MEASURE**



**BUST**

Measure under the arm and around the fullest part of the bust with arms down, keeping tape horizontal.

**SIZE CHART**

	XS	S	M	L	XL	XXL	3XL	4XL
Size	2	4/6	8/10	12/14	16/18	20/22	24/26	28/30
Bust	32-34	35-36	37-38	39-41	42-44	45-47	48-51	52-55

**COLOR INFORMATION**

**Please note: PMS code information is shown only when an exact match is available.**



Black  
PMS NTR BLACK  
C



Graphite Heather  
PMS COOL GRAY  
11C



Pink Rush  
PMS 7435C



True Navy  
PMS 533C



Vintage Heather  
PMS COOL GRAY  
9C