



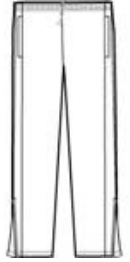
Whether worn alone or with a Sport-Tek wind shirt, these water-repellent pants provide lightweight protection.

- 100% polyester
- 100% polyester mesh lining above knees, poly lining below for easy on/off
- Elastic waistband with draw cord
- Side pockets
- Back pocket with hook and loop closure
- Extended leg zippers

*\*Please note: This product is transitioning from woven labels to tag-free labels. Your order may contain a combination of both labels*

**CARE INSTRUCTIONS**

Machine wash cold, gentle cycle with like colors. Use mild detergent, remove immediately. Do not allow to lay on itself when wet. Do not Bleach. Tumble dry low. Cool iron, if needed.



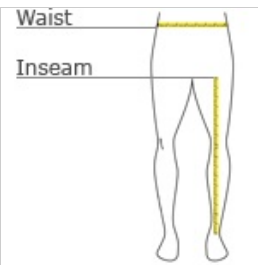
front



back

[Tips For Effectively Screen Printing Polyester Fabrics](#)

**HOW TO MEASURE**



**WAIST**

Measure around the smallest part of the natural waist.

**INSEAM**

Measure a similar style pant that fits well and is the desired length. Measure from the crotch seam to the hem.

**SIZE CHART**

	XS	S	M	L	XL	2XL	3XL	4XL
Waist	26-28	29-31	32-34	35-37	38-40	41-43	44-47	48-51
Inseam	30	31	32	32	33	33 1/2	34	34 1/2

**COLOR INFORMATION**

**Please note: PMS code information is shown only when an exact match is available.**



Black  
PMS NTR BLACK  
C



Graphite



True Navy  
PMS 533C



True Royal  
PMS 7686C

