

Port Authority® Tall Textured Soft Shell Jacket. TLJ705

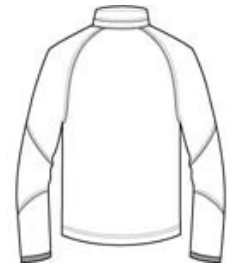


Perfect for everyday wear, our soft shell jackets have an understated texture that make them a bit more sophisticated than other soft shells. Super soft and flexible, these jackets deliver pure comfort as well as water and wind protection. The raglan silhouette gives you optimum range of motion, while the angled zippered chest pocket adds visual appeal.

- 96/4 poly/spandex woven shell bonded to 100% polyester microfleece with laminated film insert to repel water and wind
- 1000MM fabric waterproof rating
- 1000G/M² fabric breathability rating
- Storm flap with chin guard
- Ergonomic zipper pulls
- Zippered chest pocket
- Front zippered pockets
- Spandex-trimmed cuffs
- Port Pocket™ for easy embroidery access



front



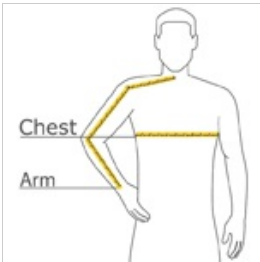
back

CARE INSTRUCTIONS

Machine wash cold with like colors. Only non-chlorine bleach if needed. Tumble dry low, remove promptly. Cool iron if necessary.

[Tips For Effectively Screen Printing Polyester Fabrics](#)

HOW TO MEASURE



CHEST WIDTH

Measure under the arm and around the fullest part of the chest with arms down, keeping tape horizontal.

ARM

Place hand on hip. Start at the center of the back of the neck and measure across the shoulder, to the elbow, and then down to the wrist.

SIZE CHART

	LT	XLT	2XLT	3XLT	4XLT
Chest	41-43	44-46	47-49	50-53	54-57

COLOR INFORMATION

Please note: PMS code information is shown only when an exact match is available.



Black
PMS NTR BLACK
C