

Port Authority® Tall Glacier® Soft Shell Jacket. TLJ790



One of our most popular jackets, the Glacier® is constructed from a polyester stretch woven shell, which is then bonded to polyester microfleece with an added laminate film insert to repel water. The result is a wind-resistant, water-resistant jacket with stretch that's perfect for corporate or weekend wear.

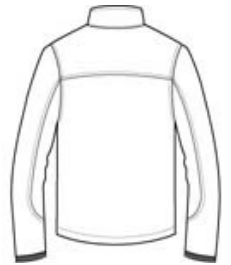
- 96/4 poly/spandex stretch woven shell
- 100% polyester microfleece lining
- 1000MM fabric waterproof rating
- 1000G/M² fabric breathability rating
- Two-way zipper
- Zippered chest pocket
- Front zippered pockets
- Binding at cuffs
- Open hem

CARE INSTRUCTIONS

Machine wash cold. Do not dry clean, iron, bleach or tumble dry.



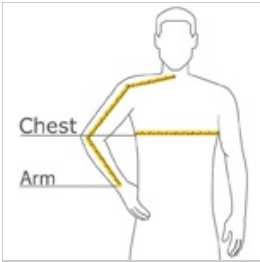
front



back

[Tips For Effectively Screen Printing Polyester Fabrics](#)

HOW TO MEASURE



CHEST WIDTH

Measure under the arm and around the fullest part of the chest with arms down, keeping tape horizontal.

ARM

Place hand on hip. Start at the center of the back of the neck and measure across the shoulder, to the elbow, and then down to the wrist.

SIZE CHART

	LT	XLT	2XLT	3XLT	4XLT
Chest	41-43	44-46	47-49	50-53	54-57

COLOR INFORMATION

Please note: PMS code information is shown only when an exact match is available.



Black/ Chrome
PMS 419 C



Smoke Grey/
Chrome
PMS CL GY 10 C