



Whether worn alone or with a Sport-Tek wind shirt, these water-repellent pants provide lightweight protection.

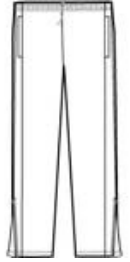
- 100% polyester
- 100% polyester mesh lining above knees, poly lining below for easy on/off
- Elastic waistband with draw cord
- Side pockets
- Back pocket with hook and loop closure
- Extended leg zippers

*\*Please note: This product is transitioning from woven labels to tag-free labels. Your order may contain a combination of both labels*

**CARE INSTRUCTIONS**

Machine wash cold, gentle cycle with like colors. Use mild detergent, remove immediately. Do not allow to lay on itself when wet. Do not bleach.

[Tips For Effectively Screen Printing Polyester Fabrics](#)

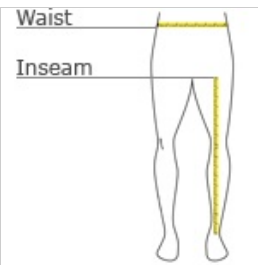


front



back

**HOW TO MEASURE**



**WAIST**

Measure around the smallest part of the natural waist.

**INSEAM**

Measure a similar style pant that fits well and is the desired length. Measure from the crotch seam to the hem.

**SIZE CHART**

|       | XS    | S     | M     | L     | XL    |
|-------|-------|-------|-------|-------|-------|
| Waist | 24-25 | 25-26 | 26-27 | 27-28 | 28-31 |

**COLOR INFORMATION**

**Please note: PMS code information is shown only when an exact match is available.**



Black  
PMS NTR BLACK  
C



True Navy  
PMS 533C



True Royal  
PMS 7686C

