



A soft cotton hand combines with sweat-wicking, stretchable performance to make training cooler and drier.

- 5-ounce, 95/5 poly/spandex jersey
- Loose athletic fit
- Tag-free transfer label
- Raglan sleeves

*\*Due to the nature of polyester performance fabrics, special care must be taken throughout the screen printing process.*

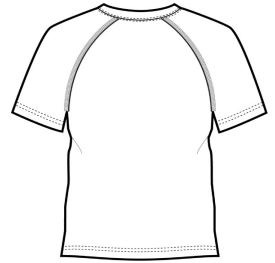
**CARE INSTRUCTIONS**

MACHINE WASH COLD. WITH LIKE COLORS. NON-CHLORINE BLEACH ONLY IF NEEDED. DO NOT USE FABRIC SOFTNER. TUMBLE DRY LOW, REMOVE PROMPTLY. COOL IRON IF NEEDED. DO NOT DRY CLEAN.

[Tips For Effectively Screen Printing Polyester Fabrics](#)

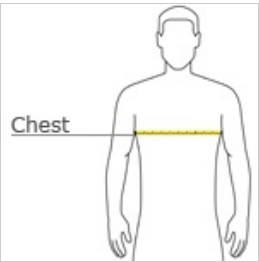


front



back

**HOW TO MEASURE**



**CHEST WIDTH**

Measure under the arm and around the fullest part of the chest with arms down, keeping tape horizontal.

**SIZE CHART**

	XS	XL
Size	4	18/20
Chest	25-26	32-35

**COLOR INFORMATION**

**Please note: PMS code information is shown only when an exact match is available.**

